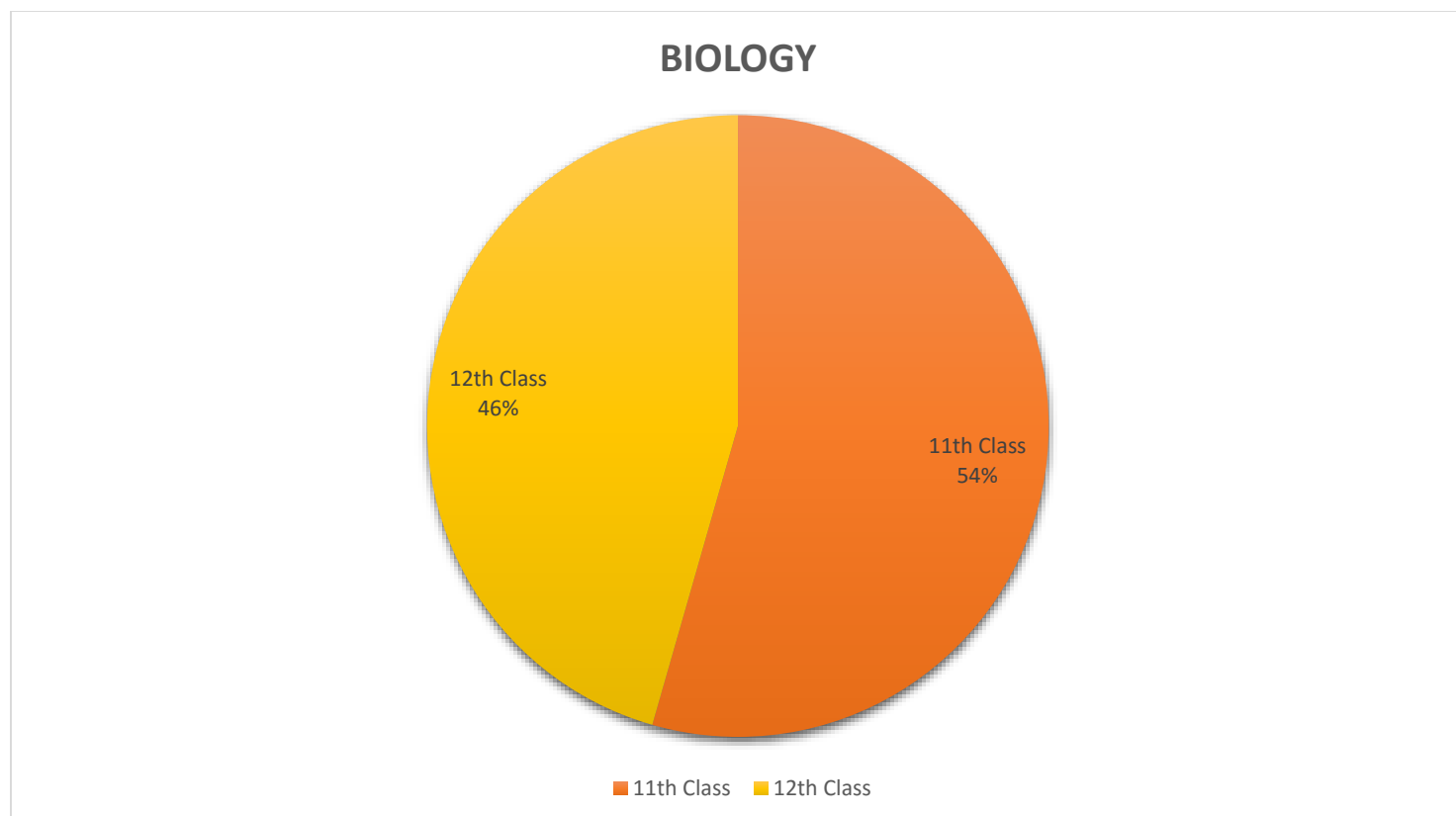


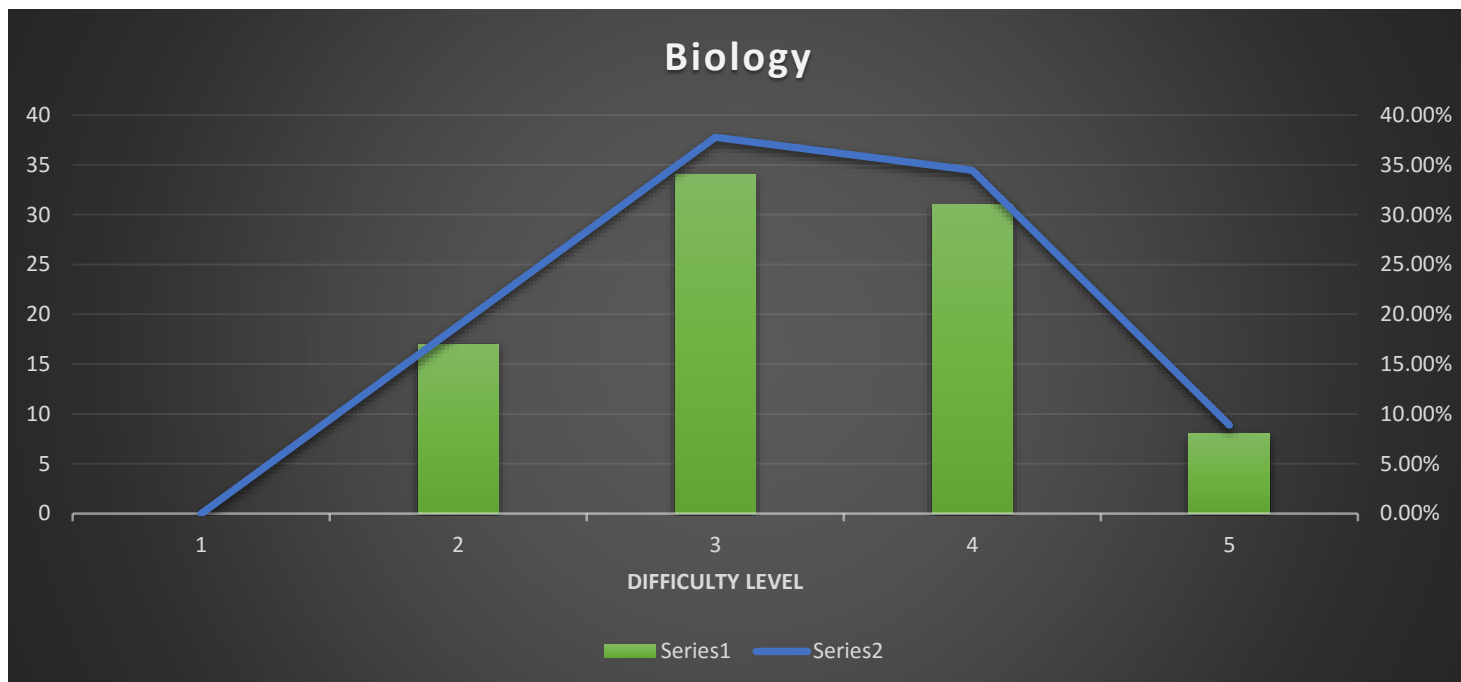
## Re AIPMT 2015 Paper Analysis

### Biology

The Biology section of the paper was slightly easier than the previous paper and the distribution pattern of the paper shows that there are 49 questions from 11<sup>th</sup> class and 41 questions from 12<sup>th</sup> class which when compared to the traditional distribution of 45 Class 11<sup>th</sup> questions and 45 Class 12<sup>th</sup> questions in past years is a slight deviation. This shows that a student who wouldn't have revised and practiced Class 11<sup>th</sup> syllabus well then he would be at a loss as compared to those who practiced it well. There are 17 questions which are from an easy difficulty level, 65 questions from a medium difficulty level and only 8 questions from a high difficulty level. Easy and medium difficulty level questions were distributed over the chapters Cell cycle and division, Plant Physiology, Biotechnology and Human Physiology. Students who attempted these chapters first, would have fared better at other questions, attributed to the raised confidence level. This year the Biology section was comparatively much tougher than Physics and Chemistry. The Average Ideal time per question is 45 seconds. Overall, the difficulty level of the paper is 3.33 which is on the high side as compared to the other papers. Distribution of marks and weightage are shown in below charts.

#### Class wise question distribution:



**Difficulty wise question distribution:**

Chapter Name	No of Qs	Total Marks	Wtg of Chapter
Principles of Inheritance and Variation	7	28	3.89%
Molecular Basis of Inheritance	3	12	1.67%
Morphology of Flowering Plants	6	24	3.33%
Cell: The Unit of Life	6	24	3.33%
Animal Kingdom	4	16	2.22%
Structural Organization in Animals	1	4	0.56%
Human Health and Diseases	3	12	1.67%
Neural Control and Coordination	2	8	1.11%
Body Fluids and Circulation	3	12	1.67%
Sexual Reproduction in Flowering Plants	4	16	2.22%
Biotechnology: Principles and Processes	2	8	1.11%
Cell Cycle and Cell Division	1	4	0.56%
Anatomy of Flowering Plants	2	8	1.11%
Biological Classification	9	36	5.00%
Human Reproduction	4	16	2.22%
Locomotion and Movement	2	8	1.11%
Microbes in Human Welfare	2	8	1.11%
Environmental Issues	4	16	2.22%
Ecosystems	4	16	2.22%
Photosynthesis	2	8	1.11%
Reproduction in Organisms	1	4	0.56%
Chemical Coordination and Integration	2	8	1.11%
Biotechnology and its Applications	1	4	0.56%

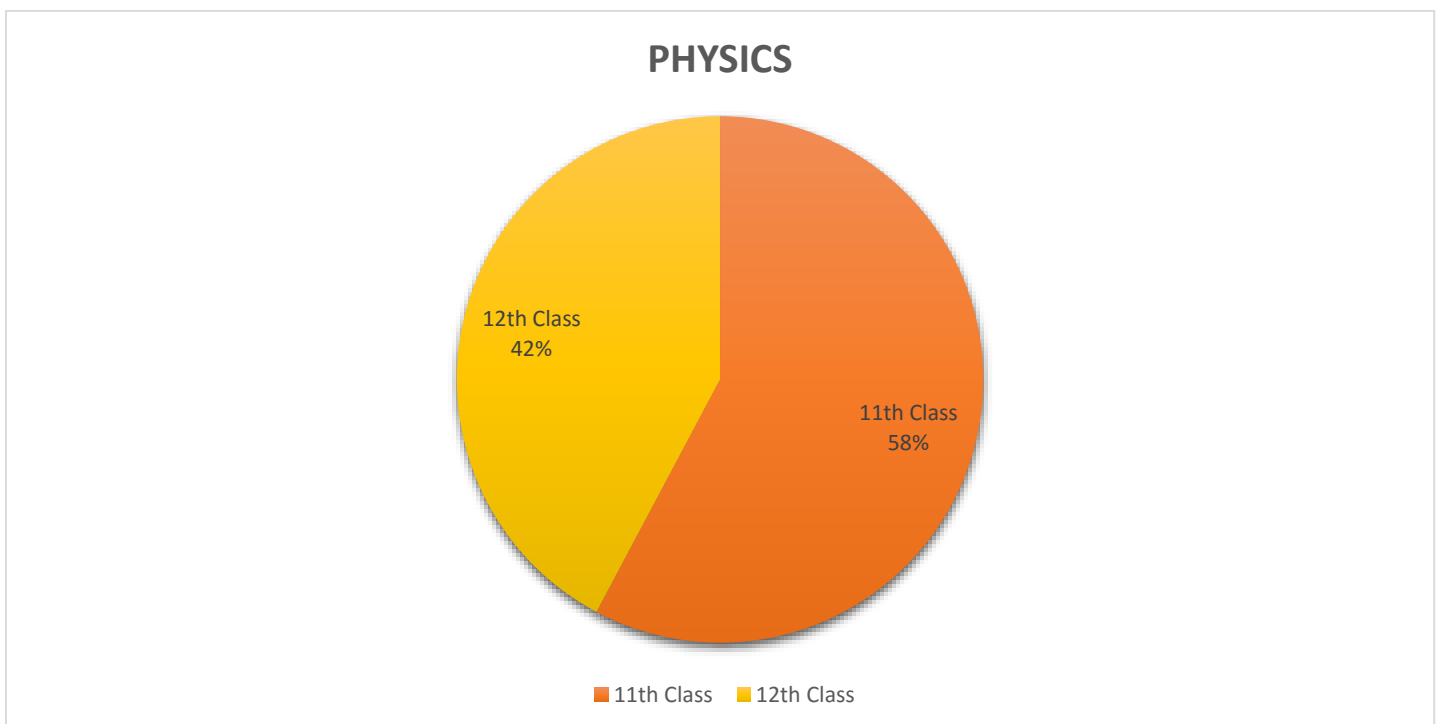


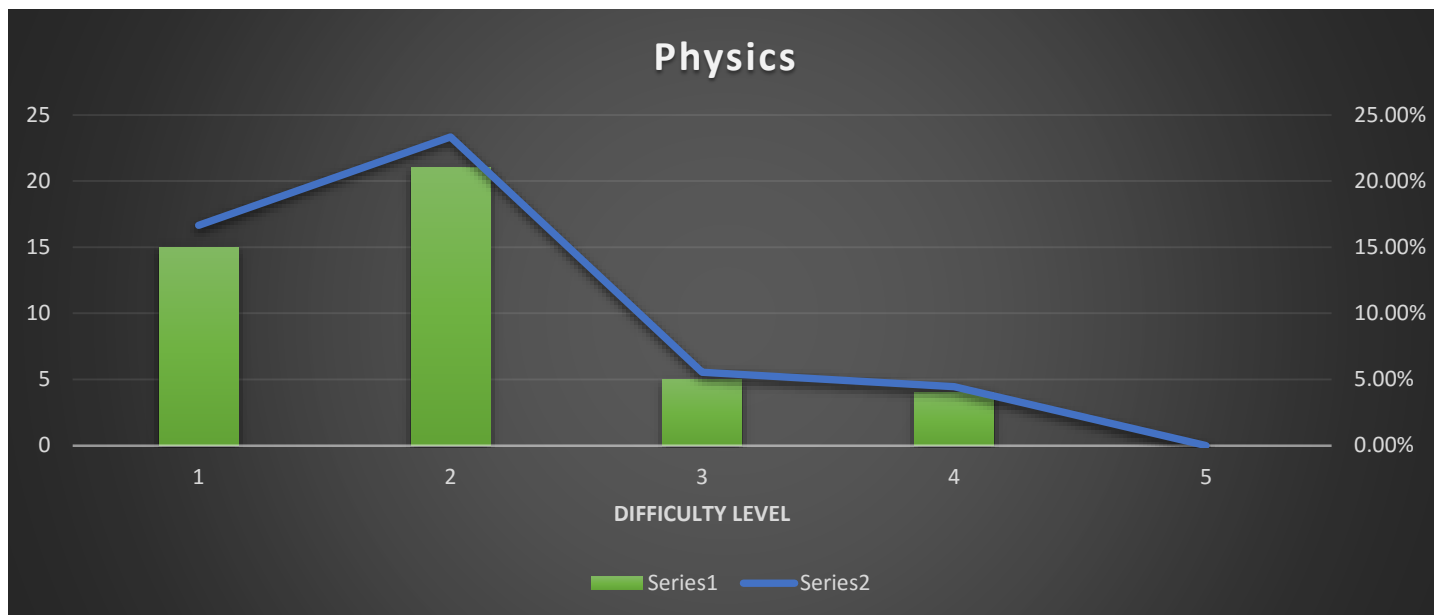
Strategies for Enhancement in Food Production	1	4	0.56%
Evolution	2	8	1.11%
Digestion and Absorption	1	4	0.56%
Excretory Products and Their Elimination	2	8	1.11%
Biomolecules	2	8	1.11%
Organisms and Populations	2	8	1.11%
Transport in Plants	1	4	0.56%
Reproductive Health	1	4	0.56%
Mineral Nutrition	1	4	0.56%
Breathing and Exchange of Gases	1	4	0.56%
Plant Growth and Development	1	4	0.56%

## Physics

This time physics paper was less difficult than previous one which means it was good scoring paper. Most of the questions are easy to solve. In Physics paper 26 questions are from class 11<sup>th</sup> and 19 questions are from class 12<sup>th</sup> standard. 15 questions are easy difficulty level and 26 questions are medium difficulty level and 4 questions are high difficulty level. On compare to other subjects Physics paper was easier than Biology and Chemistry. On an average, Ideal time for per question is 45 sec. Over all difficulty level of paper is 1.96 which is little difficult level. Distribution of marks and weightage are shown in below charts.

### Class wise question distribution:



**Difficulty wise question distribution:****Chapter wise weightage distribution:**

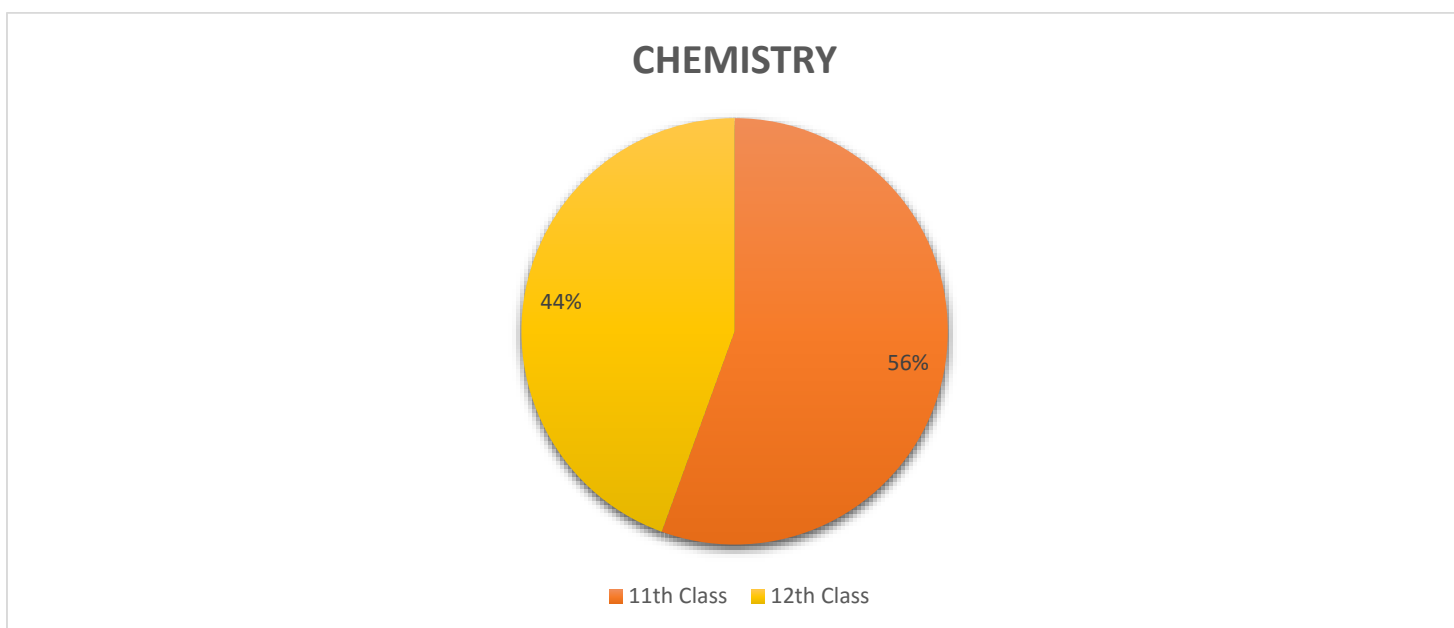
Chapter Name	No of Qs	Total Marks	Wtg of Chapter
Motion in a Plane	2	8	1.11%
Dual Nature of Radiation and Matter	3	12	1.67%
Ray Optics and Optical Instruments	2	8	1.11%
Motion in a Straight Line	1	4	0.56%
Wave Optics	2	8	1.11%
Moving Charges and Magnetism	3	12	1.67%
Thermal Properties of Matter and Kinetic Theory	2	8	1.11%
Thermodynamics	3	12	1.67%
Alternating Current	1	4	0.56%
Atoms	2	8	1.11%
Current Electricity	4	16	2.22%
System of Particles and Rotational Motion	3	12	1.67%
Waves	1	4	0.56%
Work, Energy and Power	3	12	1.67%
Oscillations	2	8	1.11%
Electric Charges and Fields	1	4	0.56%
Electrostatic Potential and Capacitance	1	4	0.56%
Gravitation	2	8	1.11%
Mechanical Properties of Solids and Fluids	5	20	2.78%
Semiconductor Electronics: Materials, Devices and Simple Circuits	1	4	0.56%
Laws of Motion	1	4	0.56%



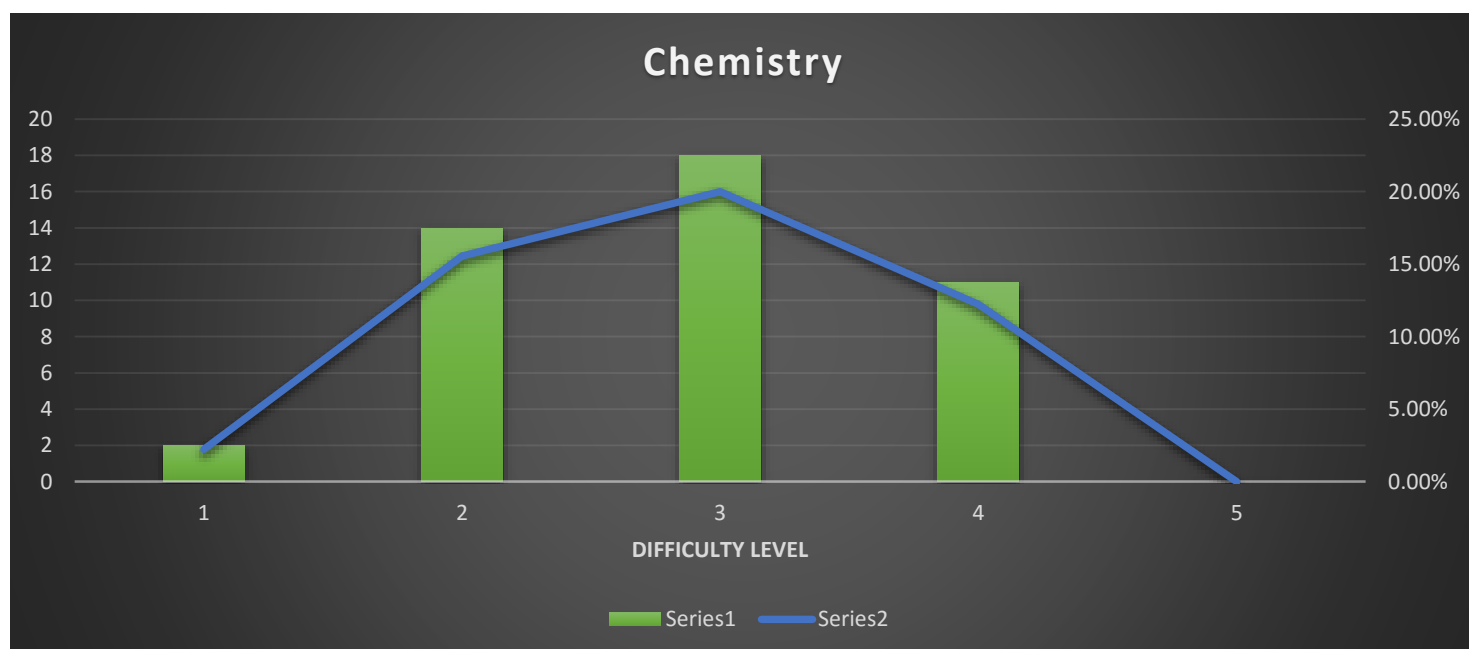
## Chemistry

Chemistry paper was little difficult than physics paper but easier than Biology paper. 25 questions are from class 11th and 20 questions are from class 12<sup>th</sup> standard. 16 questions are easy difficulty level and 18 questions are medium difficulty level and 11 questions are high difficulty level. On an average, Ideal time for per question is 55 sec. Over all difficulty level of paper is 2.84 which is medium difficult level. Distribution of marks and weightage are shown in below charts.

### Class wise question distribution:



### Difficulty wise question distribution:



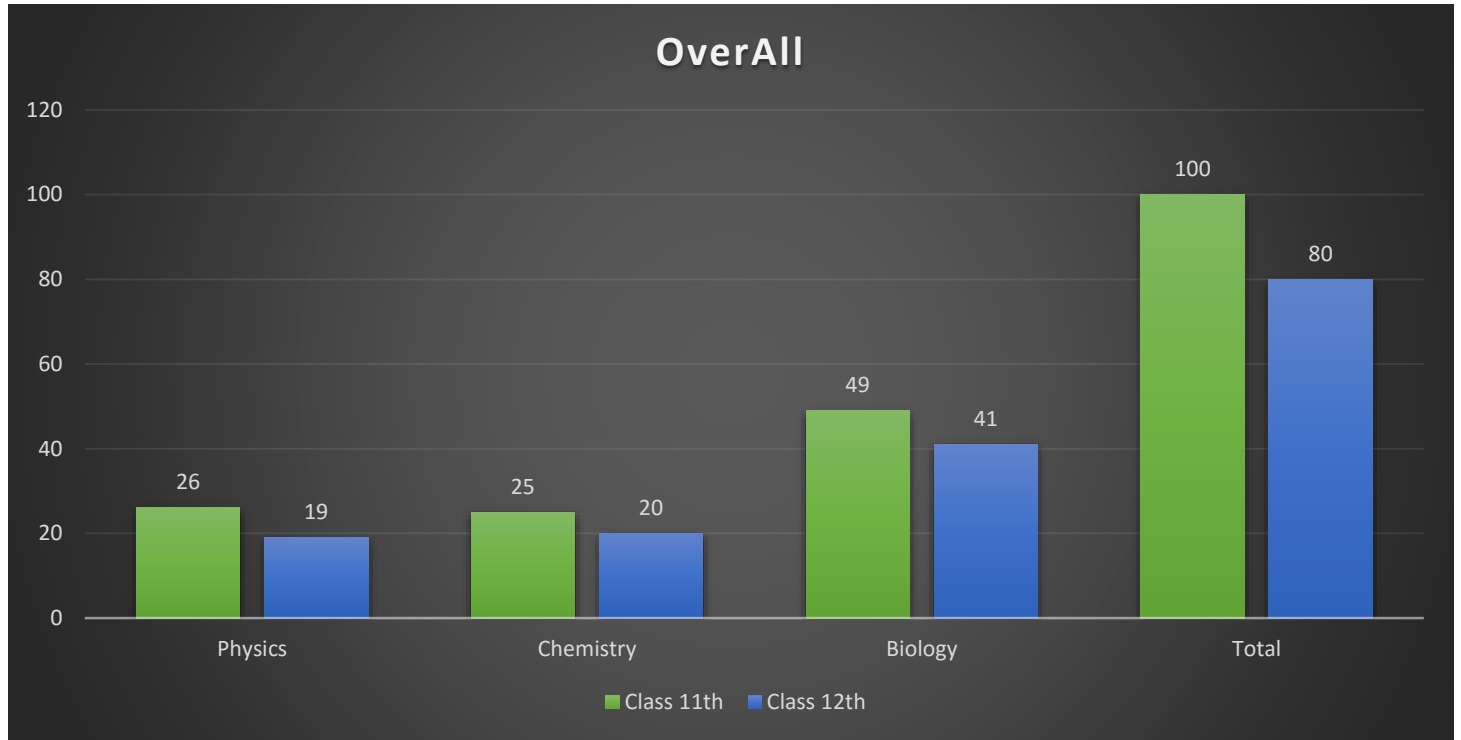
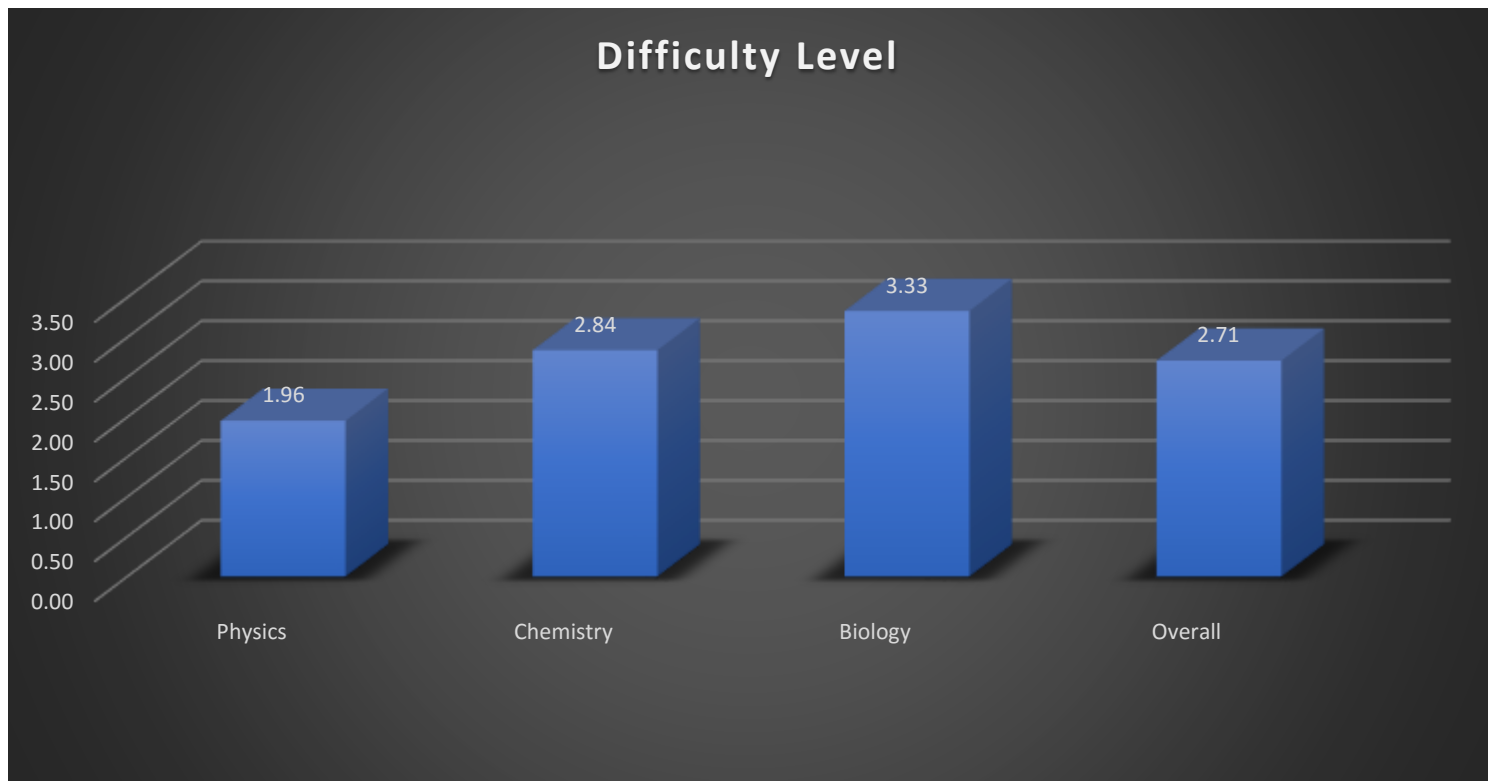
**Chapter wise weightage distribution:**

Chapter Name	No of Qs	Total Marks	Wtg of Chapter
Phenols	1	4	0.56%
Equilibrium	4	16	2.22%
Some Basic Concepts of Chemistry	4	16	2.22%
Thermodynamics and Thermochemistry	2	8	1.11%
Chemical Kinetics	1	4	0.56%
Chemical Bonding	3	12	1.67%
Hydrocarbons	1	4	0.56%
Hydrogen and the s-Block Elements	1	4	0.56%
The p-Block Elements	5	20	2.78%
Aldehydes, Ketones and Carboxylic Acids	4	16	2.22%
Some Basic Principles and Techniques	2	8	1.11%
Alkanes, Alkenes and Alkynes	2	8	1.11%
Haloalkanes and Haloarenes	2	8	1.11%
The d and f-Block Elements	2	8	1.11%
Coordination Compounds	3	12	1.67%
Polymers	1	4	0.56%
Solutions	2	8	1.11%
States of Matter	1	4	0.56%
The Solid State	2	8	1.11%
Alcohols, Phenols and Ethers	2	8	1.11%

**Overall**

In this analysis we see that in all the three papers there are 100 questions which are from 11<sup>th</sup> class and 80 questions from 12<sup>th</sup> class. So this year's paper had more importance from the 11<sup>th</sup> syllabus as compared to the 12<sup>th</sup> syllabus. Looking at the difficulty level across Physics, Chemistry & Biology we see that Physics was the easiest section in this paper having an average difficulty level of 1.96 followed by Chemistry with 2.84 and Biology being the toughest section having a difficulty level of 3.33. Although Biology was the most difficult section, overall, the average difficulty level of the entire paper is 2.71 which makes it a medium difficulty level paper. The average ideal time per question in Physics is 45 seconds, in Chemistry it is 55 seconds and in Biology it is 45 seconds. Thus, the overall average ideal time per question in the entire paper is around 48.33 (approx. 50) seconds.



**Class wise section distribution:****Difficulty wise section distribution:**

**Average Ideal Time per Question:**

